

# The Bromeliad Blade

VOLUME LII

NUMBER 10

Newsletter of the  
San Diego  
Bromeliad Society

October 2017

## President's Corner

By Scott Sandel

**Happy Autumn:** It is a time of seasonal changes. Maybe it's the changing weather that has me reflecting on how differently bromeliads in my collection respond this time of year. Most of my mature Neoregelias have finished blooming, but a few stragglers are flowering now. Those that bloomed have small offsets growing. Having Neoregelias is rewarding in that the life cycle of the fast-growing ones can be just 2-3 years. On the other hand, it takes patience to grow other genera that take 10+ years before flowering. This year, a *Tillandsia extensa* that I've had for over 10 years finally went to seed. It is a strange plant; its flowers opened on the large inflorescence slowly over 13 months. It was a regular stop on the local hummingbirds' search for nectar. It produced its last few purple-blue flowers in September when seed capsules were dehiscing (popping open and releasing seed).

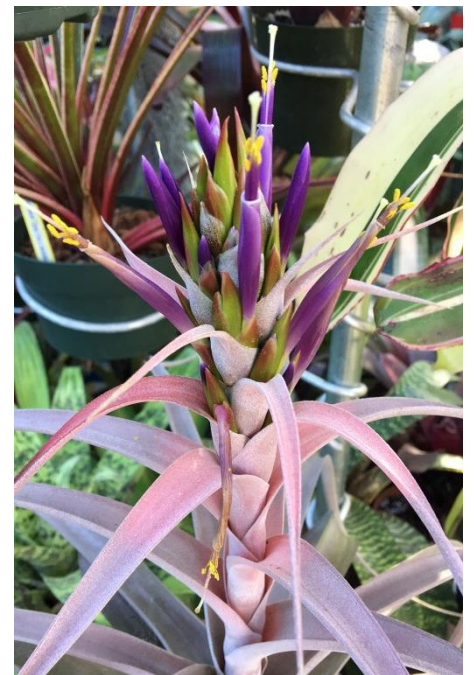


*Tillandsia extensa* – dehiscing!

There have been no offsets, and I do not see any forming yet. Another milestone for me this past month was the removal and potting up of the offsets on an *Alcantarea vinicolor* that bloomed last year. I had that *Alcantarea* plant for about 10 years as well, and after it flowered, it only produced 3 offsets! To remove them, I had to slice, cut and rip apart the old mother plant, since the offsets formed inside the rosette. Both these plants were worth the wait, and there are several long-lived

broms hanging around, waiting their turn.

**October Bus Trip:** I'll be happy if we have a near-capacity bus on our October nursery trip on Saturday, October 28 to Rainforest Flora and LiveArt Plantscapes. If you would like to go with us, please sign-up and pay at this month's meeting or have your check in Eloise's hands by October 21st. More information can be found on our website.



*Tillandsia 'El Rancho'* in bloom at Scott's

# Farewell: Dallas Bradford

By Nancy Groves



**Dallas Amadon Bradford**  
July 9, 1942- September 17, 2017

It is with sadness we report the death of long-time SDBS member, Dallas Bradford who passed away after a debilitating battle with cancer. He managed and recovered from his stroke, but couldn't beat cancer.

Dallas was the go-to guy whenever heavier work needed to be done. We could depend on him to help set up the SDBS show each year. He was always there to help others; when Les Lanning was ill, Dallas brought groceries weekly to his homebound wife. He made several trips to China with neighbors and traveled to Ecuador with some BSI members. For years his vacation spot was his place in San Filipe, Baja, Mexico, which he enjoyed.



His love of plants can be seen in his garden in Pacific Beach, which teems with many broms and other "exotic" plants, trees, and koi. Not sure how he did it, but he always had the largest plants! Dallas was large of stature, heart, and generosity. He will be remembered and missed by all of us who knew him.

A celebration of his life will be held at Miguel's Cocina, Pt. Loma on Oct. 14 from 12-4PM. (This is right after our SDBS meeting on Sat., so it would be nice if many of us could show up to pay our respects.)

## September Meeting

### Talk

We had a presentation by Juliana Raposo, your newsletter editor, on her visits to the incredible bromeliad collections of Elton Leme and Orlando Graeff in Brazil.

### Plant Table & Auction

The raffle table by Dave Kennedy was incredible. So many spotless collector's plants! He also brought a full table of extra-special broms for sale and donated 3 impressive specimens for the club auction.



*Orthophytum vagans albomarginated*, *xQuesistrum 'Claudia'*, and unknown *Dyckia* "seedling swarm". September auction plants.

# September Show and Tell

Portea 'Candy'  
Neoregelia 'Crimson Tide' (top right)  
Cristy Brenner



Top: Cristy, looking sassy with a Portea 'Candy' that matched her outfit; Bottom: the goodies at the plant table



Tillandsia delicata on concretian rock  
David Kennedy (above)



Tillandsia 'Eric Knoblock'  
Scott Sandel

Puya humilis  
Orthophytum navoioides (now Sincoraea navoioides) x Cryptanthus micrus (now Forzzaea micra)  
Bob Wright

Tillandsia straminea  
Joann Dossett

Guzmania sanguinea  
Nancy Groves

Orthophytum 'Brown Turkey' (bottom right)  
Aechmea smithiorum  
Pam Peters



Bob, holding his bigeneric cross that is impossible to name. Sincoforzaea???



## Upcoming Events

### SDBS Meetings

October 14, 2017 @ 10 AM  
SDBS Monthly Meeting  
Balboa Park, Casa del Prado, room 104  
[www.sandiegobromeliadsociety.org](http://www.sandiegobromeliadsociety.org)

November 11, 2017 @ 10 AM  
SDBS Monthly Meeting  
Balboa Park, Casa del Prado, room 104  
[www.sandiegobromeliadsociety.org](http://www.sandiegobromeliadsociety.org)

**World Bromeliad  
Conference 2018**  
San Diego



May 29 - June 3, 2018  
**fiesta de las bromelias**

**Price drop: Now only \$290!**  
**Register at:**  
<http://www.bsi.org/new/conference->

### Monthly Meetings

**1<sup>st</sup> Tuesday, 6:30 PM**  
San Diego Orchid Society  
Balboa Park, Casa Del Prado, Room 101  
[www.sdorchids.com](http://www.sdorchids.com)

**2<sup>nd</sup> Saturday, 10 AM**  
San Diego Bromeliad Society  
Balboa Park, Casa Del Prado, Room 104  
[www.sandiegobromeliadsociety.org](http://www.sandiegobromeliadsociety.org)

**2<sup>nd</sup> Saturday, 1 PM**  
San Diego Cactus and Succulent Society  
Balboa Park, Casa Del Prado, Room 101  
[www.sdcss.net](http://www.sdcss.net)

**2<sup>nd</sup> Monday, 5:45 PM**  
San Diego Horticultural Society  
Congregation Beth Israel (CBI)  
9001 Towne Centre Drive  
San Diego, CA 92122  
[sdhort.org](http://sdhort.org)

## October Meeting

In the October meeting our speaker will be our own Pam Koide-Hyatt, owner of Birdrock Tropicals, with a presentation is on Cork, A Renewable Product. Cork is used for mounting orchids and tillandsias. In March I was in Portugal and visited a Cork Oak Forest and cork stopper production facility. I will discuss the characteristics of cork oak and how cork is grown, harvested. I will then show how cork stoppers are made. After the presentation I will demonstrate an easy and simple technique for mounting tillandsias on cork.

### October Plant Table

The October plant table will feature plants from Tropiflora, and handpicked by Robert Kopfstein. There will also be a few gems left over from previous tables and hopefully, a few interesting donations. *Billbergia 'Evelyn Metz'*, which is a John Metz cross between *zebrina* and *pyramidalis* and has a spectacular bloom will be an auction plant as will the *xVriecantarea Julietta*. (photo is a bloom of an *Evelyn Metz* that bloomed for me). Here are some of the bromeliads I expect to be on the table. I hope to see you at the meeting and bring in a donation plant if you have something special or in bloom.

**Ae. 'Phoenix' (calyculata x recurvata)**  
**Ae. 'Mend' (cv. of lueddemanniana)**  
**Ae. nudicaulis (Chiapas)**  
**Alcantarea Imperialis (Burl Marx Clone)**  
**Bil. 'Evelyn Metz' (Zebrina x pyramidalis)**  
**Neo. Cruenta rubra**

**Neo. 'Pepper'**  
**Neoglaziovia variegata**  
**Sincoraea rafaellii**  
**Til. heteromorpha**  
**Til. 'Redy'**  
**Til. Streptocarpa**  
**Vr. 'Gwydonia' (Red Chestnut x platynema) X flammea**  
**Vr. Rafaellii**  
**Werauhia sanguinolenta rubra (Panama)**  
**xEnchotia 'Ruby'**  
**xVriecantarea Julietta**



*Billbergia 'Evelyn Metz'*

## October Bus Trip Selling Out Fast!

**October 28<sup>th</sup> Nursery Hop Only a few seats left!**

This is a special bromeliad shopping trip for you to shop till you drop. A great opportunity to visit 2 bromeliad nurseries — Larry's LiveArt Plantscapes in Gardena (Larry is the vendor with the fabulous bromeliads at our June show and Sale) and Rain Forest Flora in Torrance. Paul Isley promises to meet us and tell us about some of his fabulous hybrids.

Find the flyer [at the SDBS website](http://www.sandiegobromeliadsociety.org) or sign up in the October meeting.

# October 28<sup>th</sup> Nursery Hop

Eye Candy from LiveArt Plantscapes and Rainforest Flora



## SDBS 2017

### Officers

President

Scott Sandel

[sandel-marich@cox.net](mailto:sandel-marich@cox.net)

619-325-1990 x 110

Vice-President

Al Evans, Jr.

[alevans001@earthlink.net](mailto:alevans001@earthlink.net)

858-492-9866

Secretary

Ruth Contino

[ruth.contino@baesystems.com](mailto:ruth.contino@baesystems.com)

619-303-2144

Treasurer

Kerry Nelson

[kanelsondesign@cox.net](mailto:kanelsondesign@cox.net)

619- 574-0987

Newsletter Editor

Juliana Raposo

[julianadraposo@gmail.com](mailto:julianadraposo@gmail.com)

858-349-1405

Past President

Robert Kopfstein

[rwkopfstein@gmail.com](mailto:rwkopfstein@gmail.com)

760-726-8300

### Board Members

Mary Whittemore (2016-17)

[mahiw@aoi.com](mailto:mahiw@aoi.com)

619- 561-0687

Nancy Groves (2016-17)

[nngnancy.groves@gmail.com](mailto:nngnancy.groves@gmail.com)

858-453-6486

Don Nelson (2017-18)

[donnelson12@msn.com](mailto:donnelson12@msn.com)

760- 207-1569

Morlane O'Donnell (2017-18)

[Morlane.odonnell@att.net](mailto:Morlane.odonnell@att.net)

619) 422-8168

# Book Review

By Juliana Raposo

Graeff, Orlando (2015) *Fitogeografia do Brazil*, Rio de Janeiro, Nau Editora

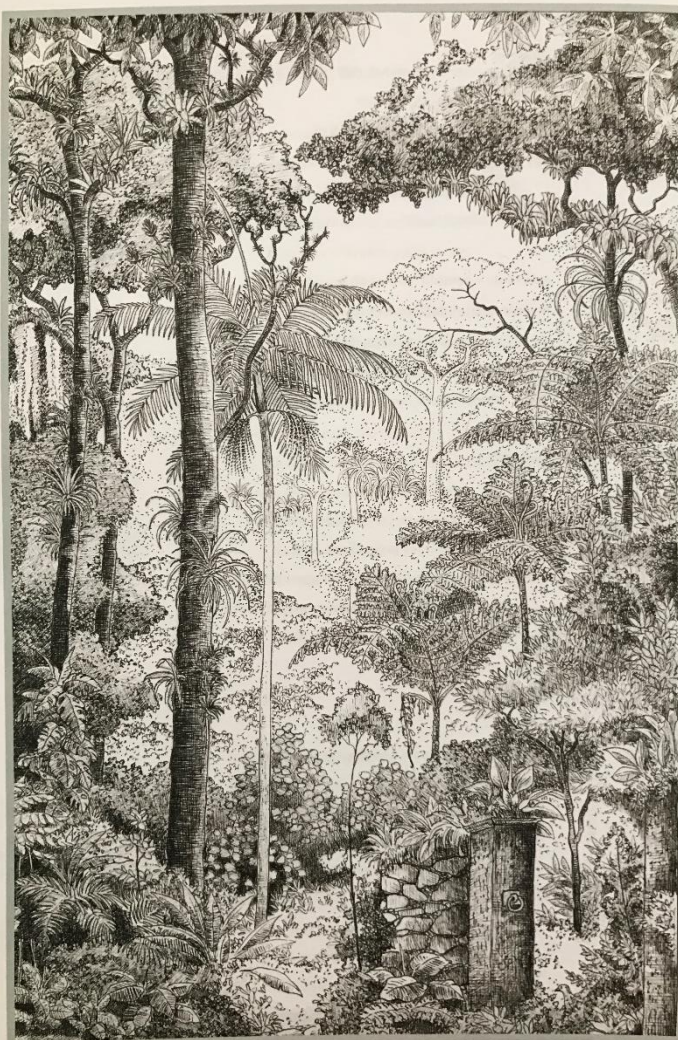
This tome was kindly donated to the club by the author, our colleague and bromeliophile Orlando Graeff, on the occasion of my visit to his garden in Rio de Janeiro, Brazil.

Graeff is a geologist and agronomist by trade, and was president of the now defunct Brazilian Bromeliad Society. The book is a result of years

of travels through every corner of Brazil, where Orlando documented, through observations and beautiful sketches, the diverse ecosystems of the country. Bromeliads are front and center, since they are ubiquitous in most Brazilian ecoregions. Phytogeography, sometimes called botanical geography, is the study of the natural vegetation as it correlates with geology and geography. That goes hand in hand with what botanists are doing now, looking at the bigger picture to find how climate, geological history, and

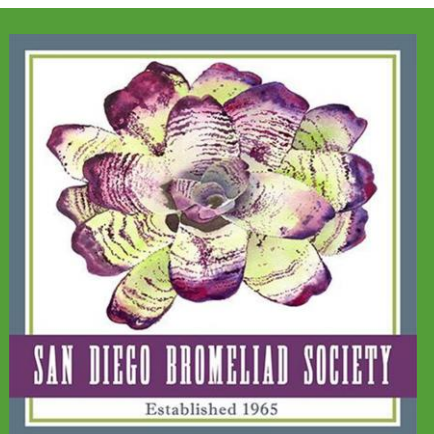
biological interactions helped shape our beloved plants.

So club members, sharpen your Portuguese (sorry, the book contains no English) and enjoy the beautiful illustrations – Orlando is a talented botanical landscape artist – and find out where the Brazilian bromeliads came from!



*One of the book's illustrations, by the author, depicting the forest near Parati, Rio de Janeiro*

## THE BROMELIAD BLADE



Newsletter of the San Diego Bromeliad Society

Juliana Raposo, Editor

Ph: 858-349-1405

To send material for publication, please contact Juliana at [julianadrapposo@gmail.com](mailto:julianadrapposo@gmail.com)

Make sure to submit your contribution before the 20<sup>th</sup> of the month for inclusion in the next newsletter.

### SDBS MEETING

The club meets on the second Saturday of the month at 10am in Balboa Park, Casa del Prado, room 104.

### SDBS WEBPAGE

[www.sandiegobromeliadsociety.org](http://www.sandiegobromeliadsociety.org)